



Cash4iPods.co.uk

iPod Mini Disassembly Guide

Repair Guide



Step by Step instructions for replacing the iPod Mini's...

- Battery
- Clickwheel
- Hard-drive
- Headphone Jack / Hold Switch
- LCD



Contents

1. Cracking the Case 3

The iPod Mini is a relatively easy iPod to 'get into'. All you need is a little patience and care and you'll be able to crack the case open and access the electronic logic board and components in no time. 3

You're going to need some tools to fix your iPod. At the very minimum the following will be required... 3

2. Removing the Click wheel 8

After you have cracked the case open and removed the logic board from the main case, the click wheel is relatively easy to remove from the empty case housing. Simply press down and out through the bottom of the casing and the iPod's click wheel will slide free of it's housing. 8

3. Removing the Mini's Battery 9

4. Removing the Hard-drive 10

Removing the hard-drive is relatively easy except again you must take care to avoid damaging the contacts on the Molex cable that attaches the physical drive to the iPod's logic board. First lever the hard-drive up and away from the logic board until you feel it click, then use your finger to lever the other end of the Molex cable away from the board. Take care, excessive force on the cable will damage the connectors. 10

5. Removing the LCD Panel 11

This is a simple procedure, simply lever up the connector arm on the iPod's logic board – use a finger nail or flat object to do this. Then remove the LCD panel from the logic boards by levering the white tabs away from their locators on the board. When you have done this simply slide the ribbon cable out of the LCD connector. 11

6. Removing Headphone Jack / Hold Switch Assembly 12

Another simple procedure, the component simply needs to be lifted away from the logic board. You can also use a screwdriver to gently pry the component free. 12

7. Reassembly 13

To reassemble just follow these instructions in reverse order. 13



I. Cracking the Case

The iPod Mini is a relatively easy iPod to 'get into'. All you need is a little patience and care and you'll be able to crack the case open and access the electronic logic board and components in no time.

You're going to need some tools to fix your iPod. At the very minimum the following will be required...

- **Small Flathead Screwdriver**
- **Small Phillips Screwdriver**

You may also want to purchase an iPod opening tool but this is not an essential tool.

Removing the plastic end covers



Insert the plastic opening tool or small flat-head screwdriver into the seam between the plastic bottom panel and the metal case. Lever the plastic case away from the unit. It is attached with adhesive – if it



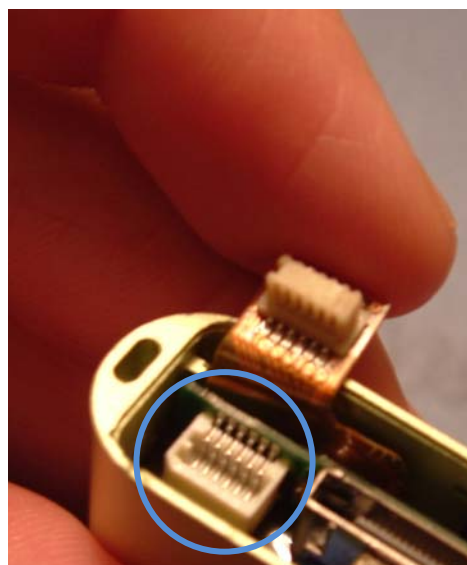
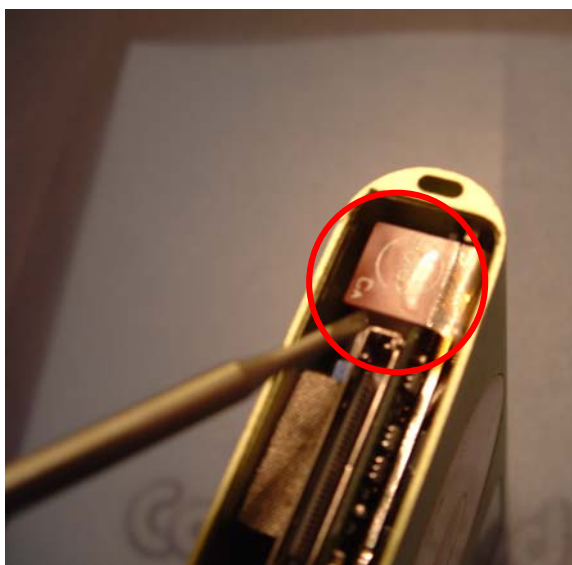
proves difficult to remove, try heating the plastic panel with a hair dryer first to loosen the adhesive.



After you have removed the plastic bottom the metal bezel will need to be removed from the bottom of the case. This is a simple procedure but you must ensure you are careful and do not damage any of the ribbon cable or components underneath the bezel. As in the picture above use a small flat-head screwdriver to lever the bezel up and away from the case – working in all four corners. The bezel will eventually pop out.



The bottom – next disconnecting the Click Wheel's molex cable...



You must take great care when disconnecting the Molex cable. To ensure it is removed without damaging the contacts on the ribbon cable, use a small flat headed screwdriver to lever it up, using the plastic connector underneath the top of the ribbon cable (See circled image above). The best way to achieve this is to insert the screwdriver as we have done in the image above and gently use the head to lever the plastic connector up from the female connector in the second picture (circled in blue).

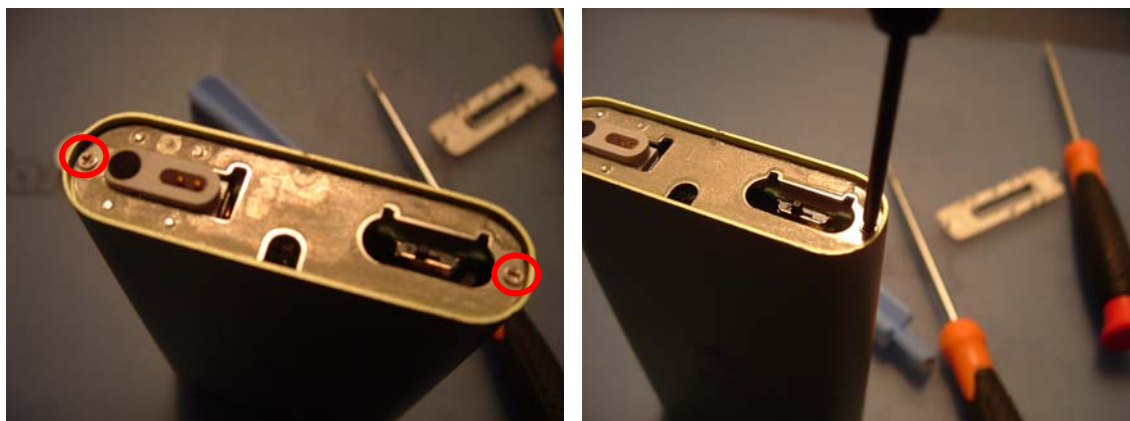
Removing the top casing...





It's now time to remove the upper plastic cover. Simply use your iPod opening tool or flat-headed screwdriver to pry the cover free from the iPod casing as in the image above.

Removing the earphone / hold switch screws



These two screws hold the logic board secure within the casing. They must be removed before you can access the logic board and all it's components to conduct the repair.

Removing the Logic Board

After these two screws have been removed, you can remove the logic board from the case by simply pushing the board from the bottom of the unit, up through the top of the casing— as in the picture below...





To complete the removal of the logic board, gently grip the sides of the board and LCD and pull the unit up until it is free of the casing.

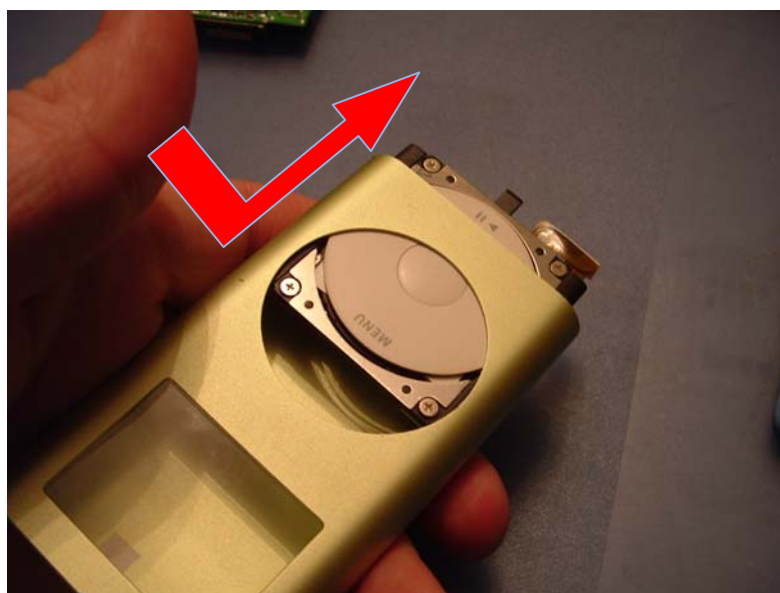
CASE CRACKED!





2. Removing the Click wheel

After you have cracked the case open and removed the logic board from the main case, the click wheel is relatively easy to remove from the empty case housing. Simply press down and out through the bottom of the casing and the iPod's click wheel will slide free of it's housing.



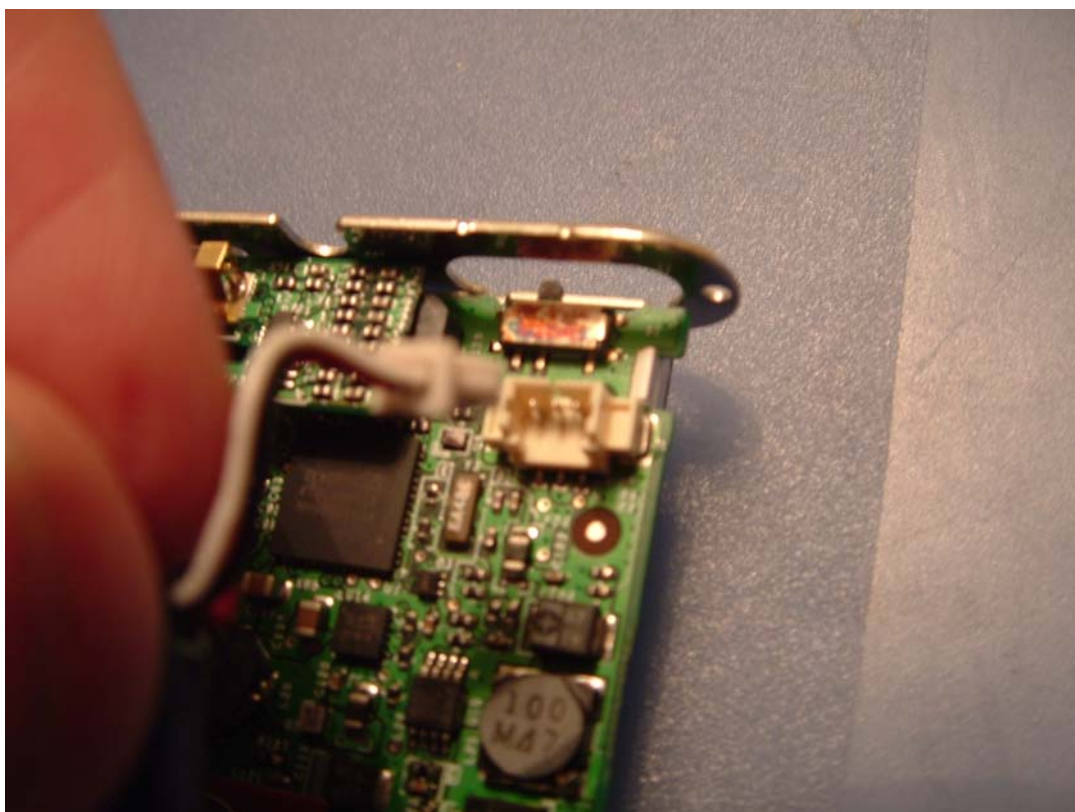
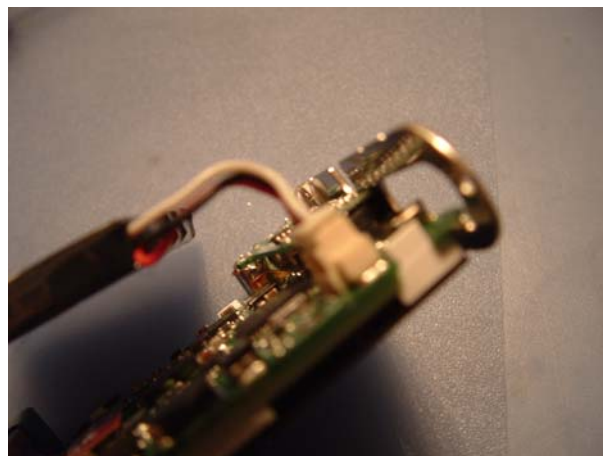
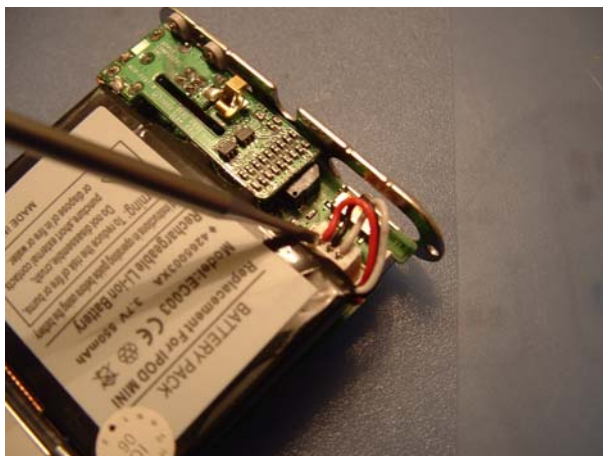
iPod and its removed parts / components





3. Removing the Mini's Battery

Again this is a relatively simple procedure if a little care is taken. The battery can be removed by pulling it up and away from the adhesive that attaches it to the logic board. Then locate the connector plug as in the picture below and use your fingers or a small screwdriver to pull it away from the logic board.





4. Removing the Hard-drive

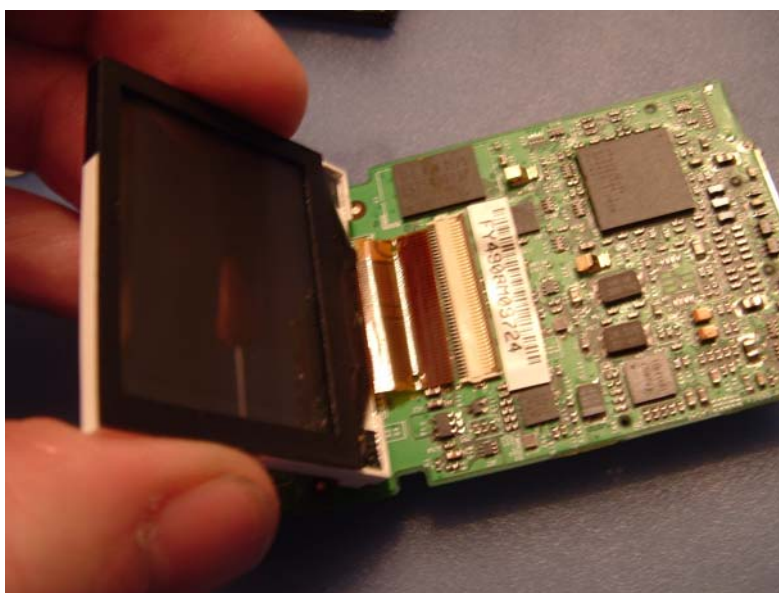
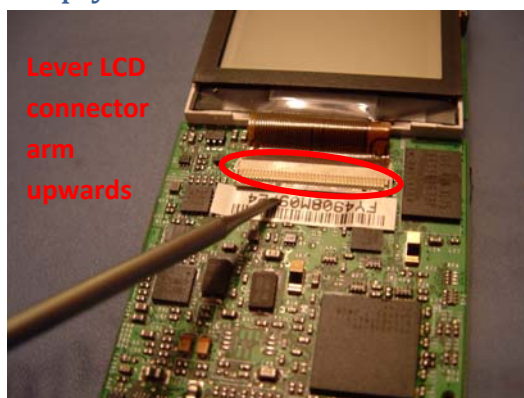
Removing the hard-drive is relatively easy except again you must take care to avoid damaging the contacts on the Molex cable that attaches the physical drive to the iPod's logic board. First lever the hard-drive up and away from the logic board until you feel it click, then use your finger to lever the other end of the Molex cable away from the board. Take care, excessive force on the cable will damage the connectors.





5. Removing the LCD Panel

This is a simple procedure, simply lever up the connector arm on the iPod's logic board – use a finger nail or flat object to do this. Then remove the LCD panel from the logic boards by levering the white tabs away from their locators on the board. When you have done this simply slide the ribbon cable out of the LCD connector.

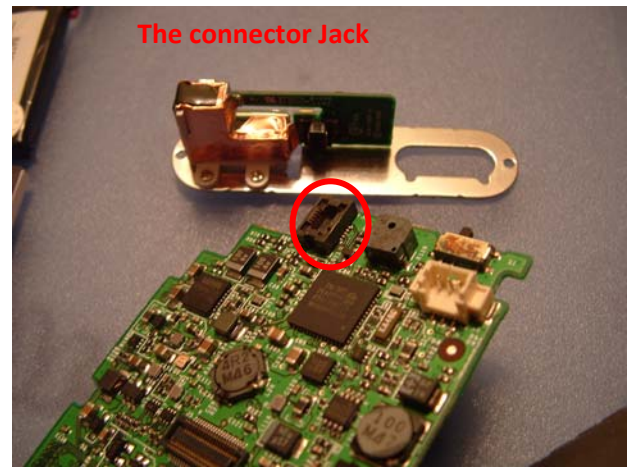
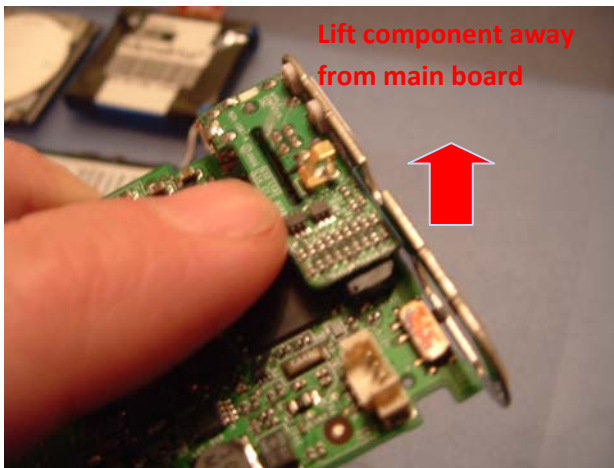


Slide LCD away and out of LCD connector.



6. Removing Headphone Jack / Hold Switch Assembly

Another simple procedure, the component simply needs to be lifted away from the logic board. You can also use a screwdriver to gently pry the component free.





7. Reassembly

To reassemble just follow these instructions in reverse order.